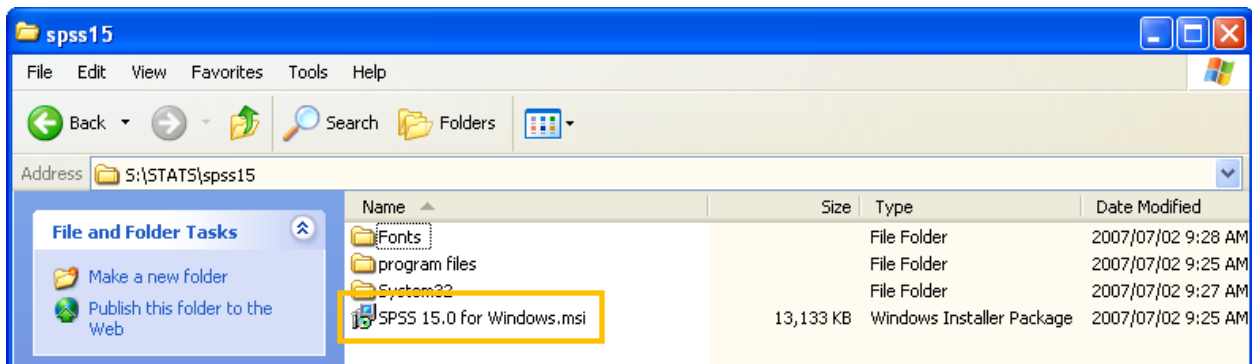


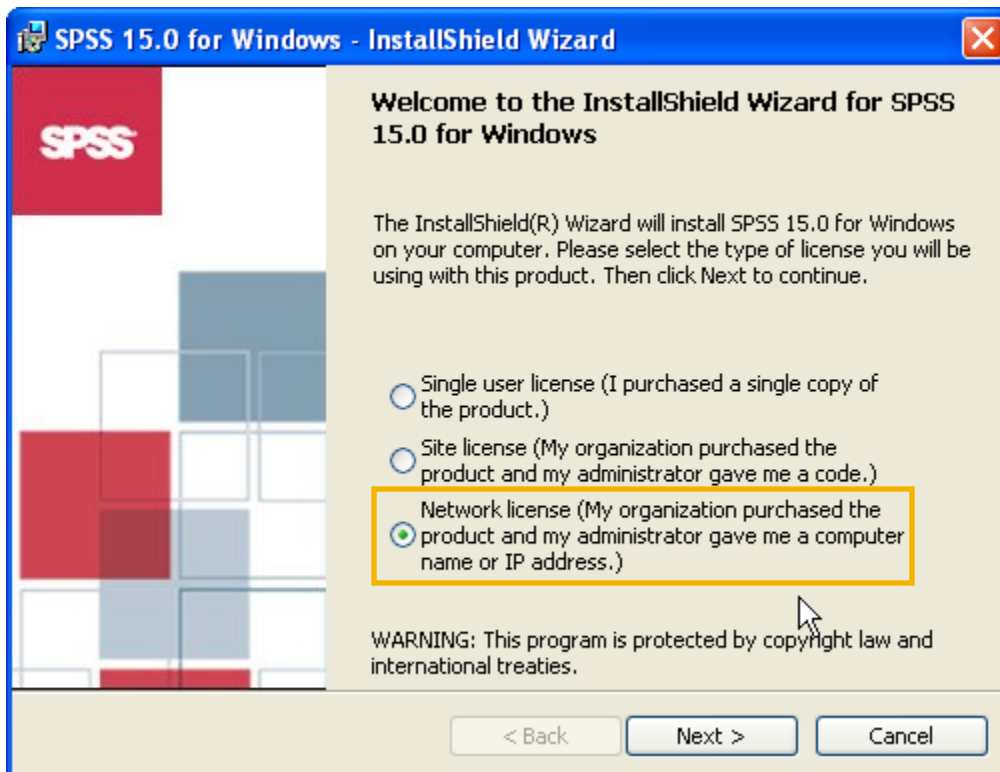
# INSTALLING SPSS 15 FOR WINDOWS

These instructions are for installing SPSS 15 for Windows on university-owned PCs to run using the KeyServer software.

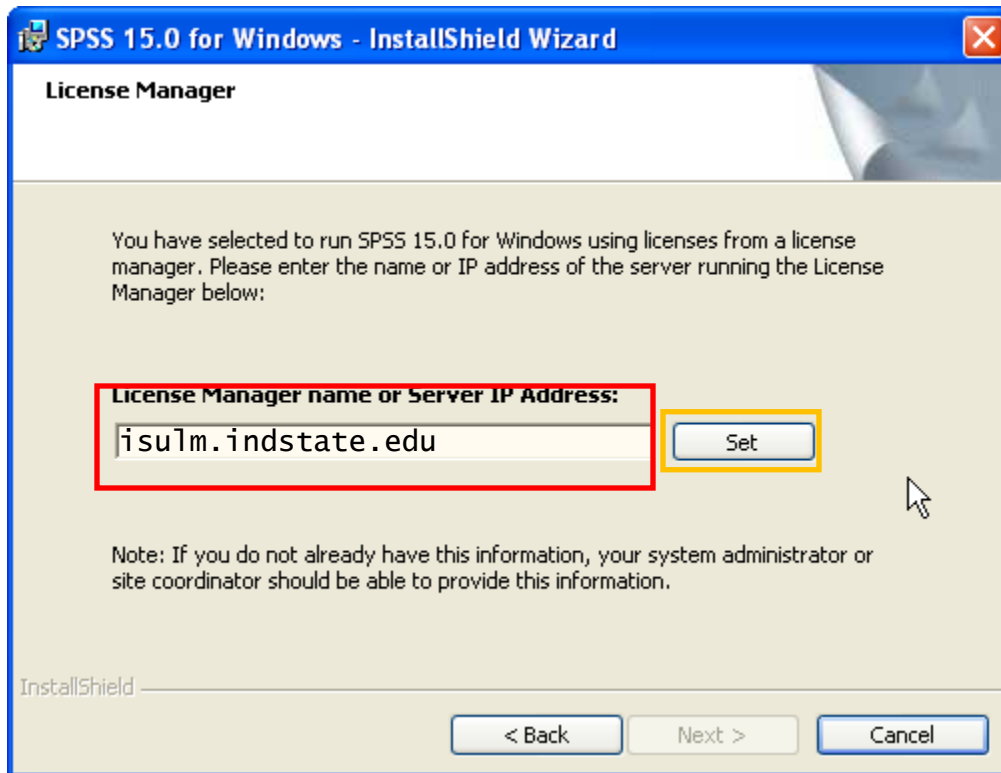
1. Login to the network.
2. Double-click on **My Computer** and find the S: drive.
3. Go to S:\STATS\spss15, then double-click **SPSS 15.0 for Windows.msi** to run it. Follow the regular procedure, using selections noted below.



4. On the **Welcome** screen, select **Network license**.



5. IMPORTANT! On the **License Manager** screen, enter **isulm.indstate.edu**, then click **Set** before clicking **Next**.



6. At the completion, the **Register with spss.com** checkbox (at the bottom) is **optional**; you may click to uncheck it if desired.

