



# INDIANA STATE UNIVERSITY - NPHC PLAZA PROJECT

Greetings,

Since the first-day students were enrolled in 1870, Indiana State University has embraced its commitment to diversity. The Divine Nine, which refers to the nation's nine historically Black Greek-letter fraternities and sororities, was founded as early as 1928 at ISU and became an integral part of the black student experience. Each semester, our Divine Nine organizations raise funds for their philanthropies, provide service hours to our communities and serve in leadership roles at the institution.

We are excited to provide a space and a beautiful structure that recognizes the long history and many contributions that our Divine Nine organizations have made and continue to make on our campus. The space will be named the NPHC Plaza and will remind those walking by it of these organizations' significance and legacy at ISU.

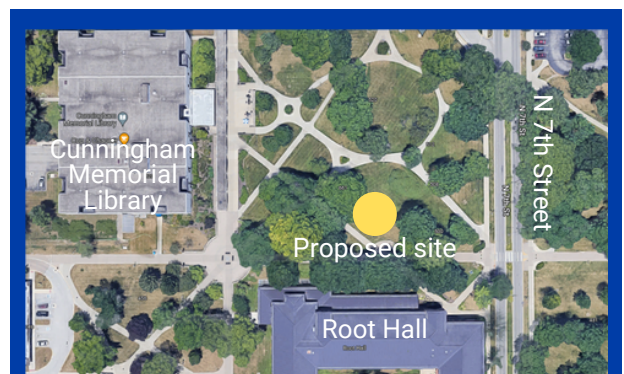
## History of NPHC at ISU

There is a long history of black Greek letter organizations at ISU. All nine Divine Nine organizations have had charters at some point in ISU's history. The Alpha Zeta chapter of Kappa Alpha Psi Fraternity, Inc. was founded on December 22, 1928 at ISU. Eighteen years later, Omega Psi Phi Fraternity, Inc.'s Chi Sigma chapter was chartered on October 4, 1946. In 1969, three more NPHC organizations joined the campus: Delta Sigma Theta Sorority, Inc.'s Zeta Nu chapter on May 3, 1969, Alpha Phi Alpha Fraternity, Inc.'s Zeta Rho chapter on May 9, 1969 and Alpha Kappa Aloha Sorority, Inc.'s

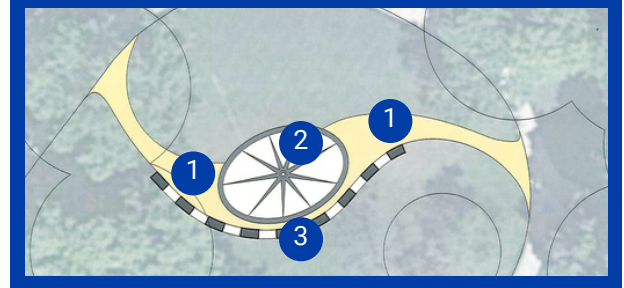
Epsilon Xi chapter on December 6, 1969. In 1972, the Beta Beta chapter of Sigma Gamma Rho Sorority, Inc. was founded on November 13, 1972. Three years later, Phi Beta Sigma Fraternity, Inc.'s Zeta Psi chapter was founded on January 18, 1975. Zeta Phi Beta Sorority, Inc.'s Iota Theta chapter was chartered on May 3, 1977. The Delta Zeta chapter of Iota Phi Theta Fraternity, Inc. was founded on July 1, 2020.

Best Regards,

Paul & Susan Chaney  
NPHC PLAZA PROJECT CHAIRS



1. Proposed sidewalk between existing pathways
2. Specialty stone work flush to sidewalk
3. ~85 linear feet x 2.5' wide masonry and limestone monument wall



# NPHC PLAZA

The NPHC Plaza will be situated in Library Park on campus, south of Cunningham Memorial Library and between the New Theatre and Root Hall. It is a highly visible campus space surrounded by walkways and trees where many faculty, staff, and students travel as they move around campus.

The Plaza's 910 square feet open circle design corresponds with the quarter circle of the National Pan-Hellenic Council organization. The structure comprises red bricks and neutral concrete resembling the university's Arch at Cherry and 3rd Streets. Each pillar of the structure will be 8 feet high and 5 feet across and be dedicated to one member of the Divine Nine, providing nine total pillars. The structure will be around a circular concrete patio stretching north and south. It will have benches for visitors to sit and reflect on the contributions of the Divine Nine at ISU.



The cost of the Plaza is approximately \$750,000, of which the university will contribute two-thirds of the funding. We are seeking donor support for \$250,000 for the project. Construction of the Plaza will begin when the fundraising has totaled \$250,000.



*Blue indicates donor wall recognition levels.*